

Output DLIS Files

DEFAULT SCMT_PSP_030LUP FN:29 PRODUCER 02-Nov-2006 05:56 3666.6 M 2772.4 M

OP System Version: 14C0-302

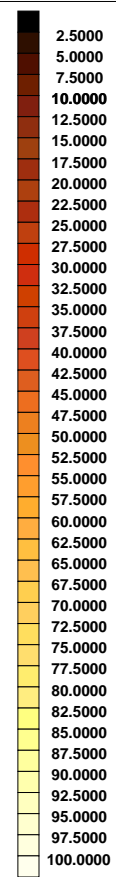
MCM

SCMT-CA SRPC-3193-Q3_2006 PSPT-A/B SRPC-3193-Q3_2006

PIP SUMMARY

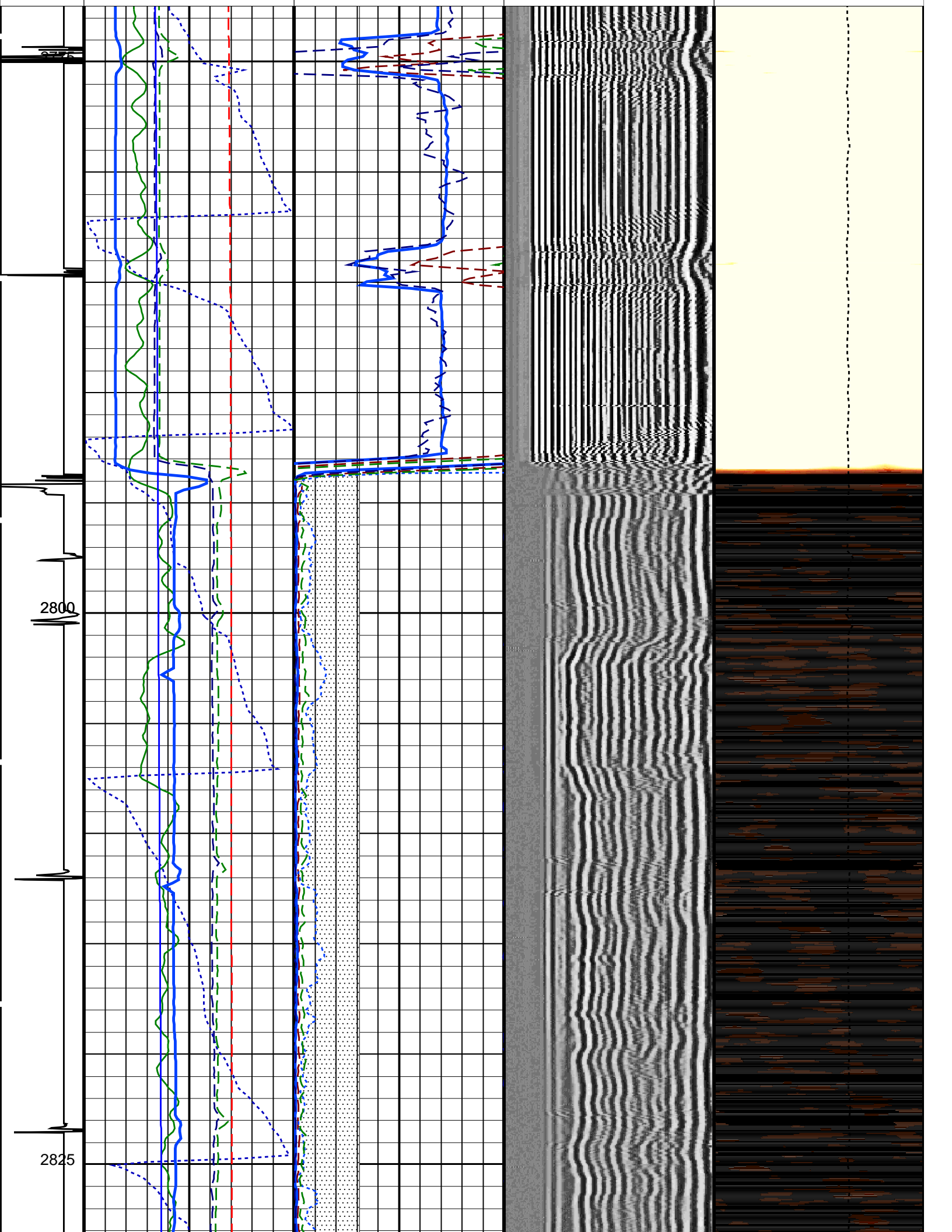
Time Mark Every 60 S

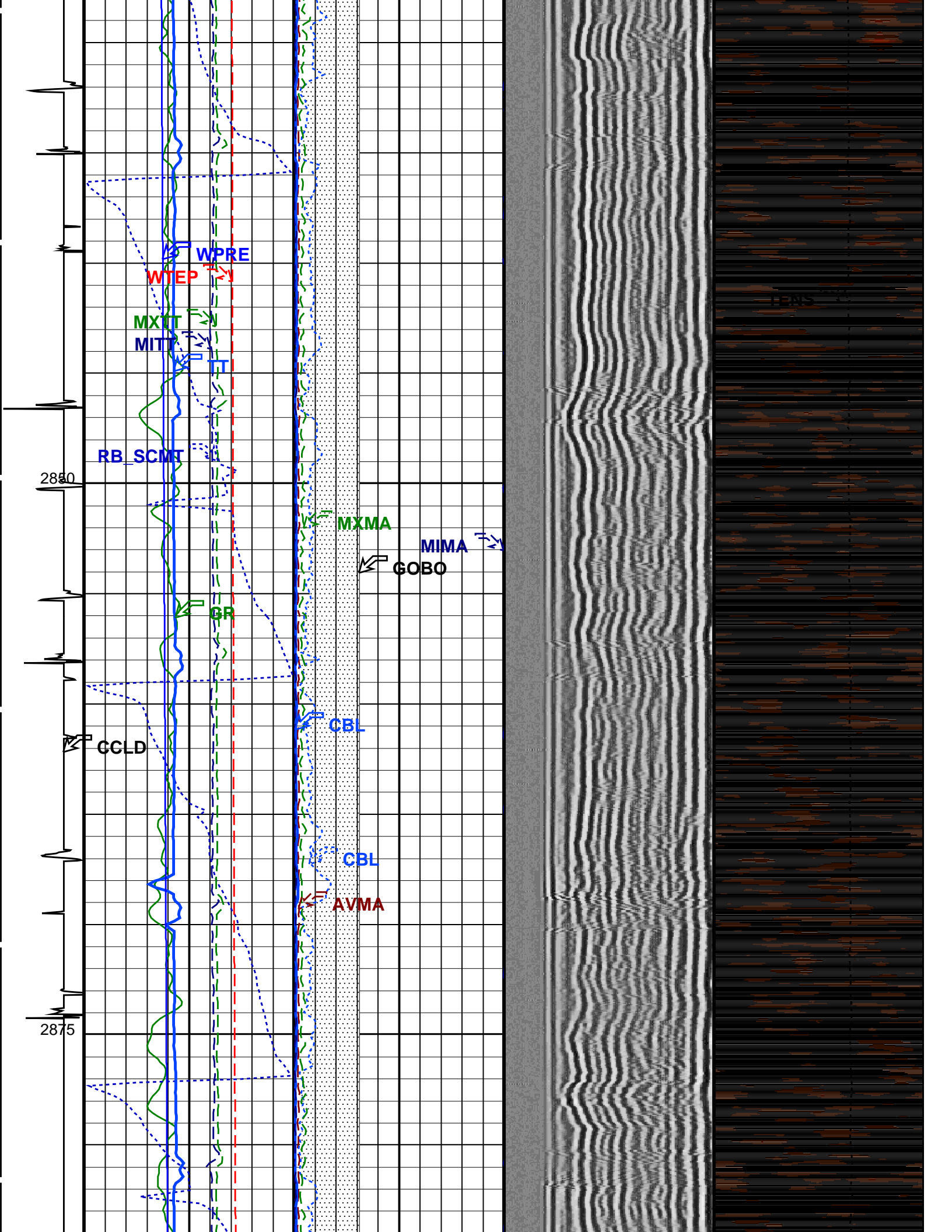
Maximum MAP Transit Time (MXTT) (US)	100	300	Maximum MAP Amplitude (MXMA) (MV)	0	100
Minimum MAP Transit Time (MITT) (US)	100	300	Minimum MAP Amplitude (MIMA) (MV)	0	100
Cbl 3.ft Transit Time (TT) (US)	200	400	GoodBond From ACBL to GOBO		
Well Pressure (WPRE) (KPA)	0	30000	Good Bond (GOBO) (MV)	0	10
Well Temperature (WTEP) (DEGC)	0	150	CBL Amplitude (CBL) (MV)	0	100
Relative Bearing (RB_SCMT) (DEG)	0	360	CBL Amplitude (CBL) (MV)	0	10



CBL Amplitude Mapping Image (0 - 100) (MPWF) (MV)

Discriminated CCL (CCLD) (V)	3	-1	Gamma Ray (GR) (GAPI)	0	150	Average MAP Amplitude (AVMA) (MV)	0	100	Min Amplitude	Max	Tension (TENS) (LBF)	0	4200
									VDL Variable Density (VDL) (US)	200	1200		





2900

2925

WPRE

WTEP

MXTT

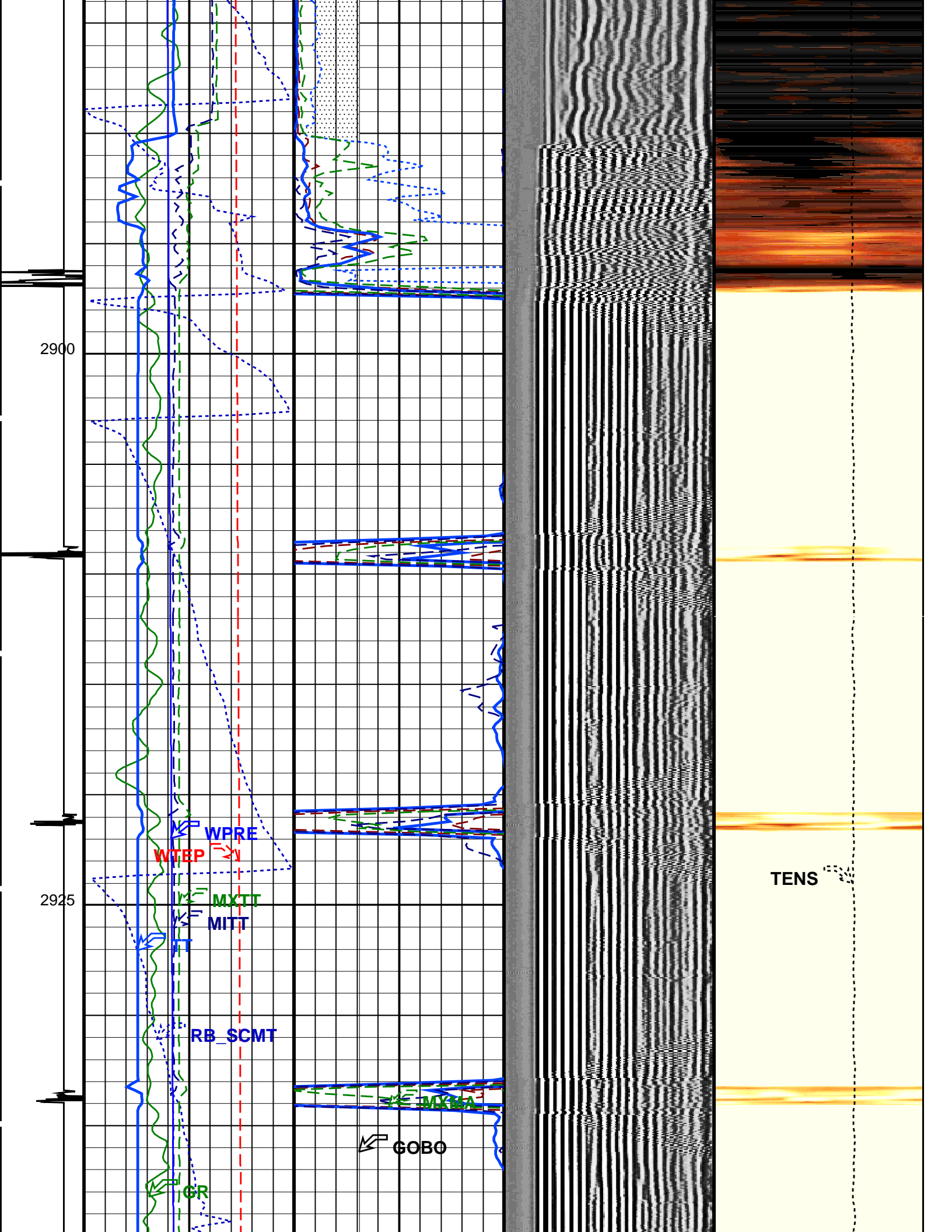
MITT

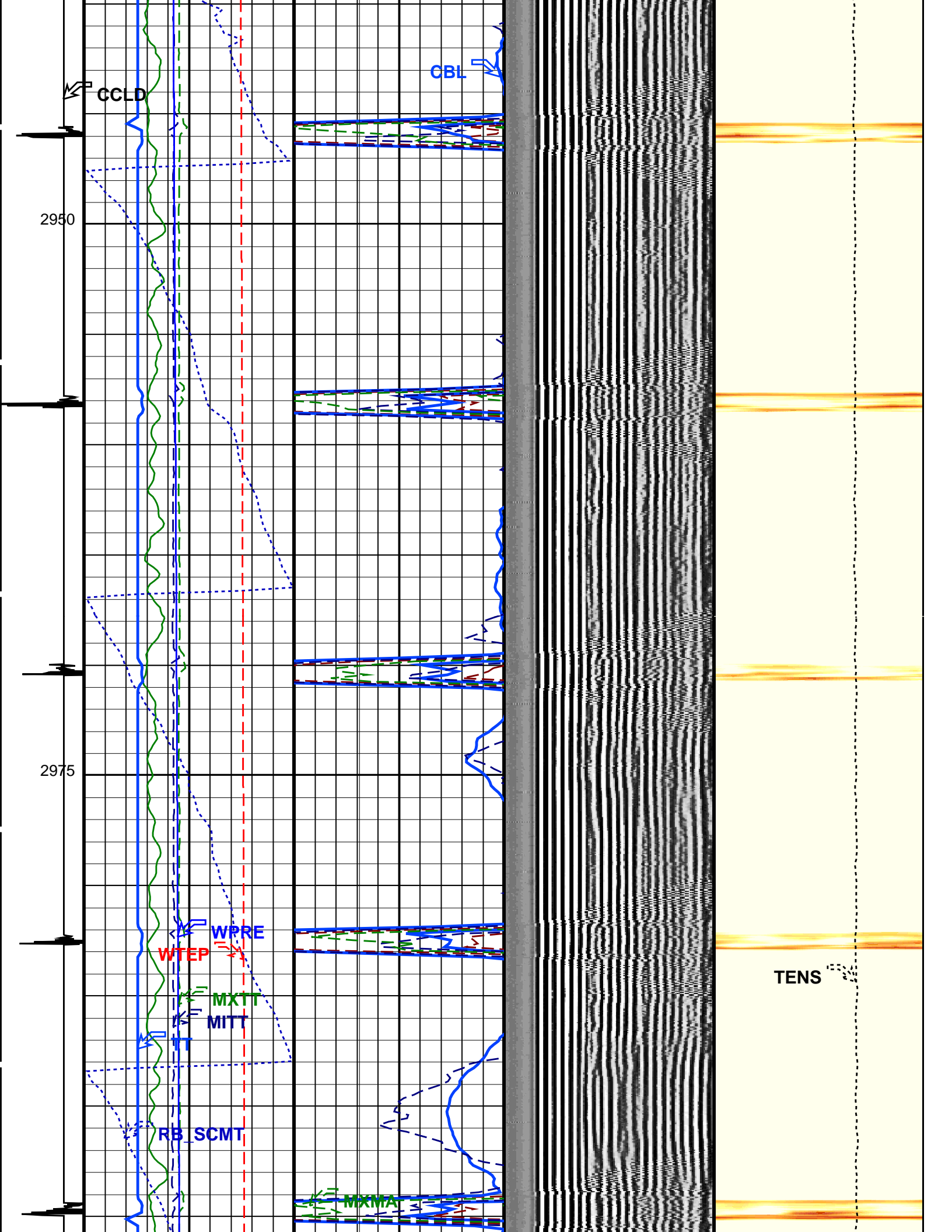
RB_SCMT

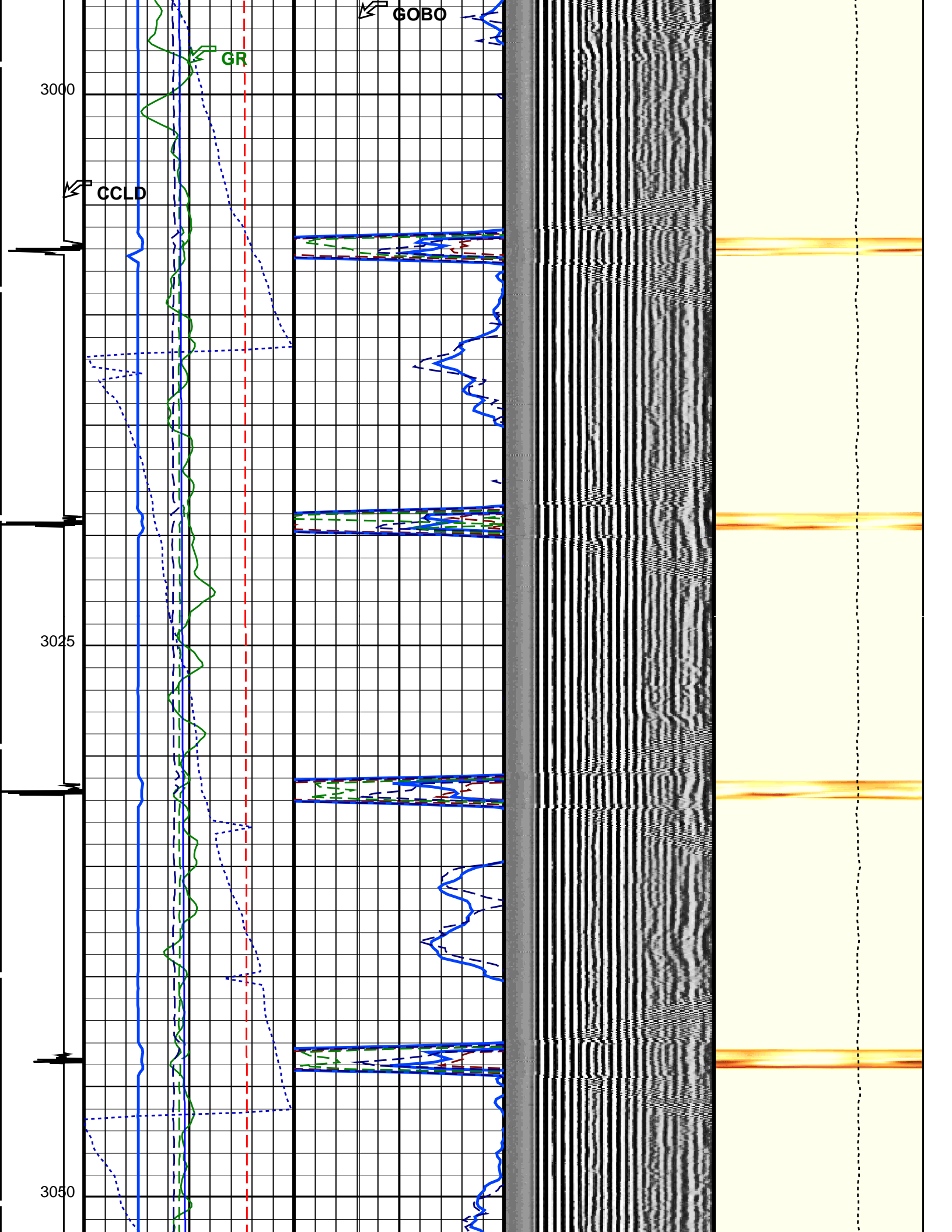
GR

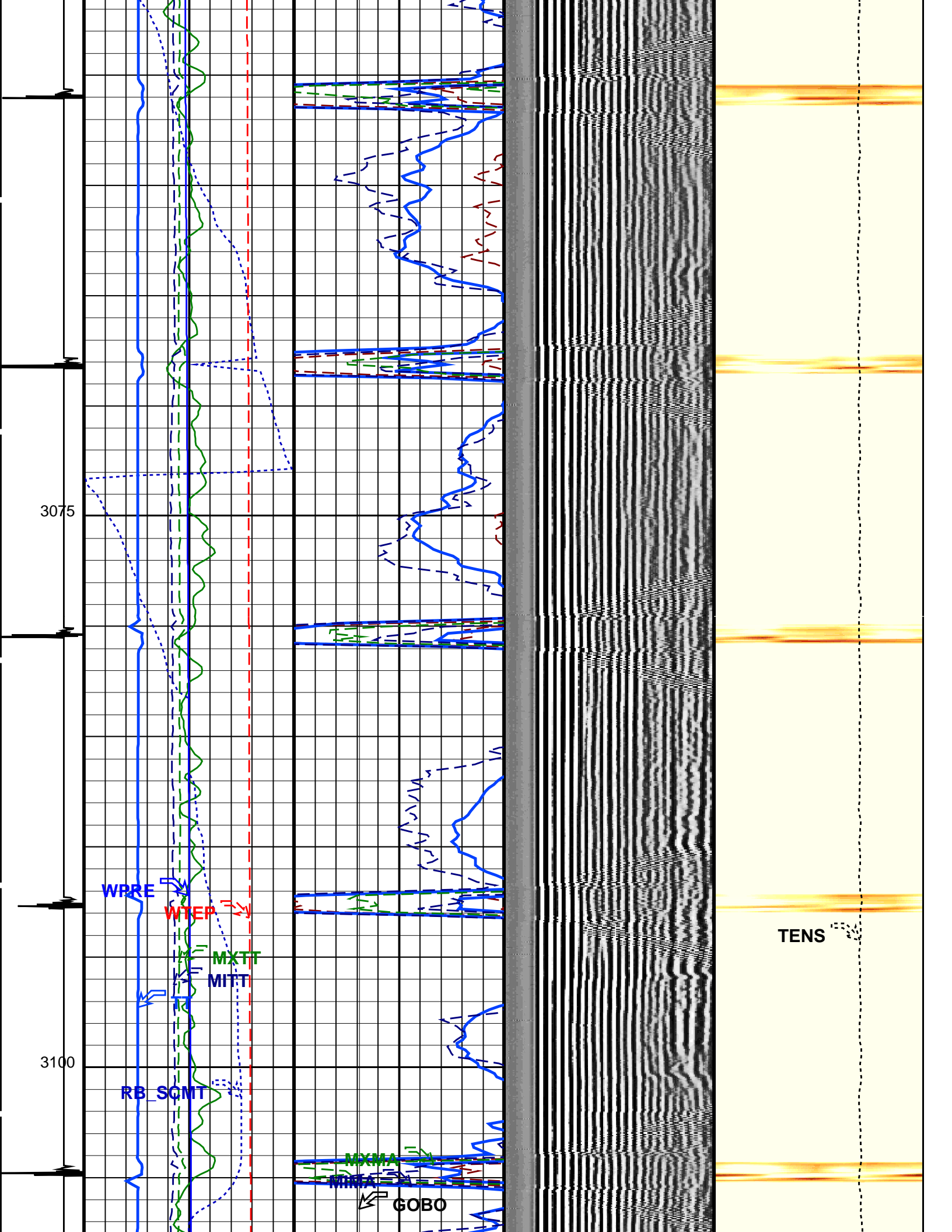
GOBO

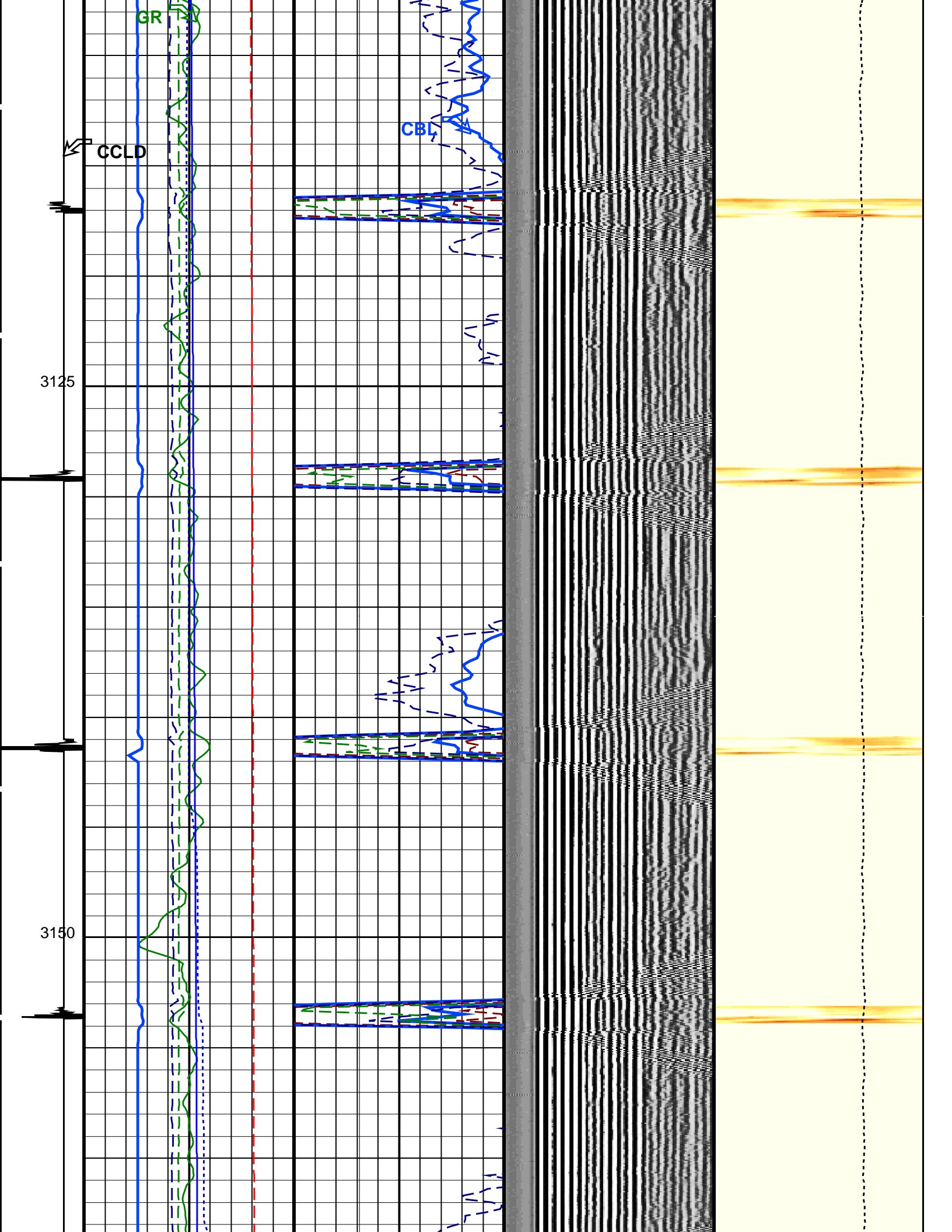
TENS

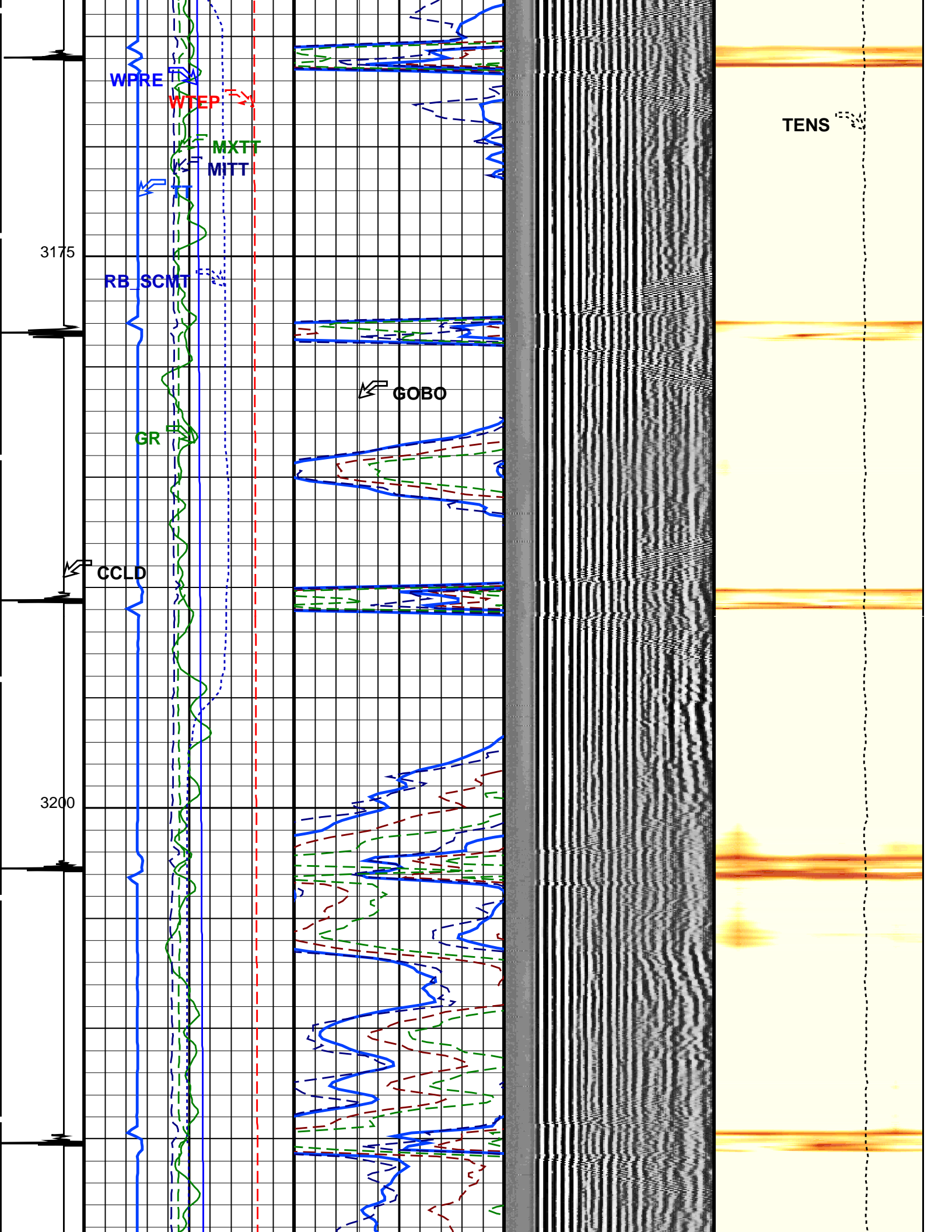


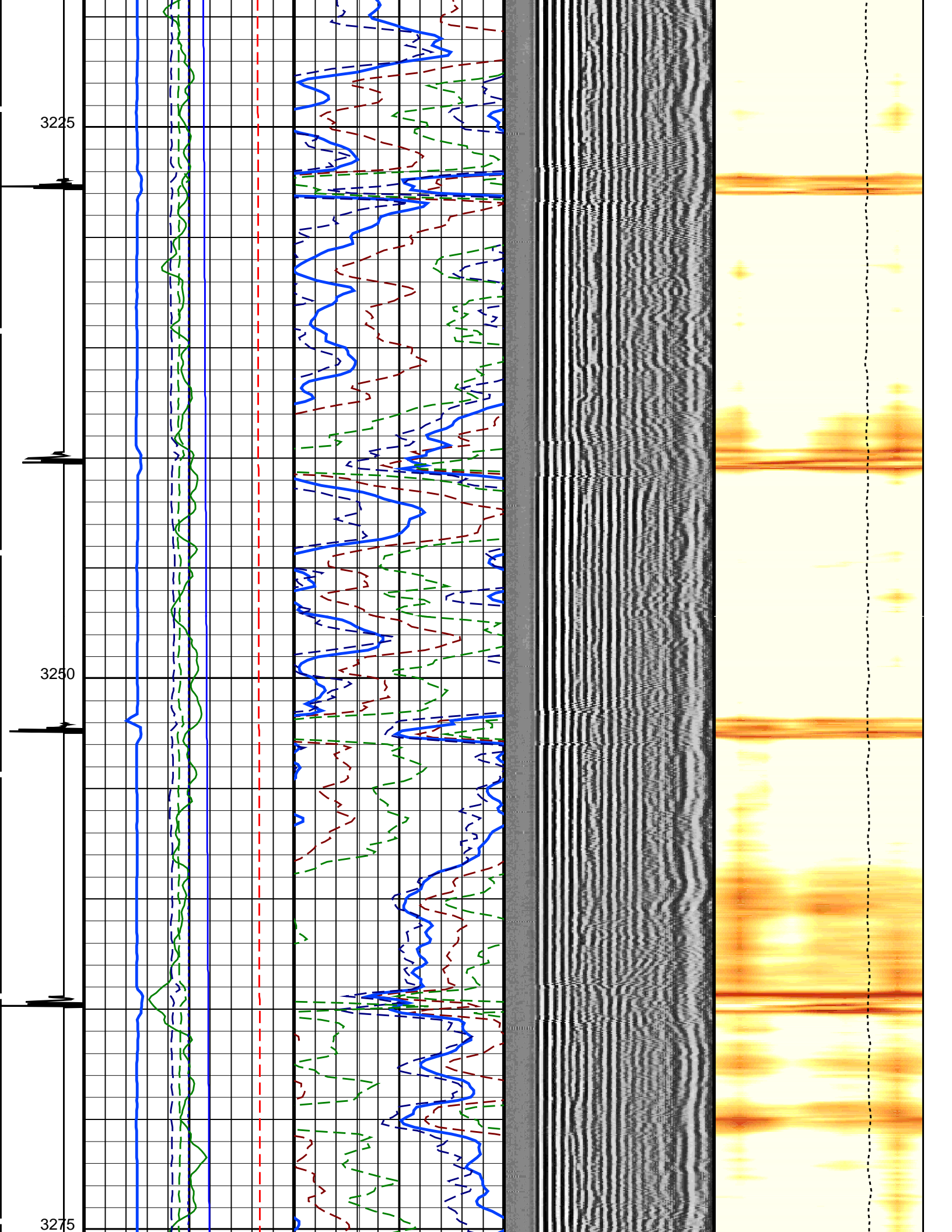


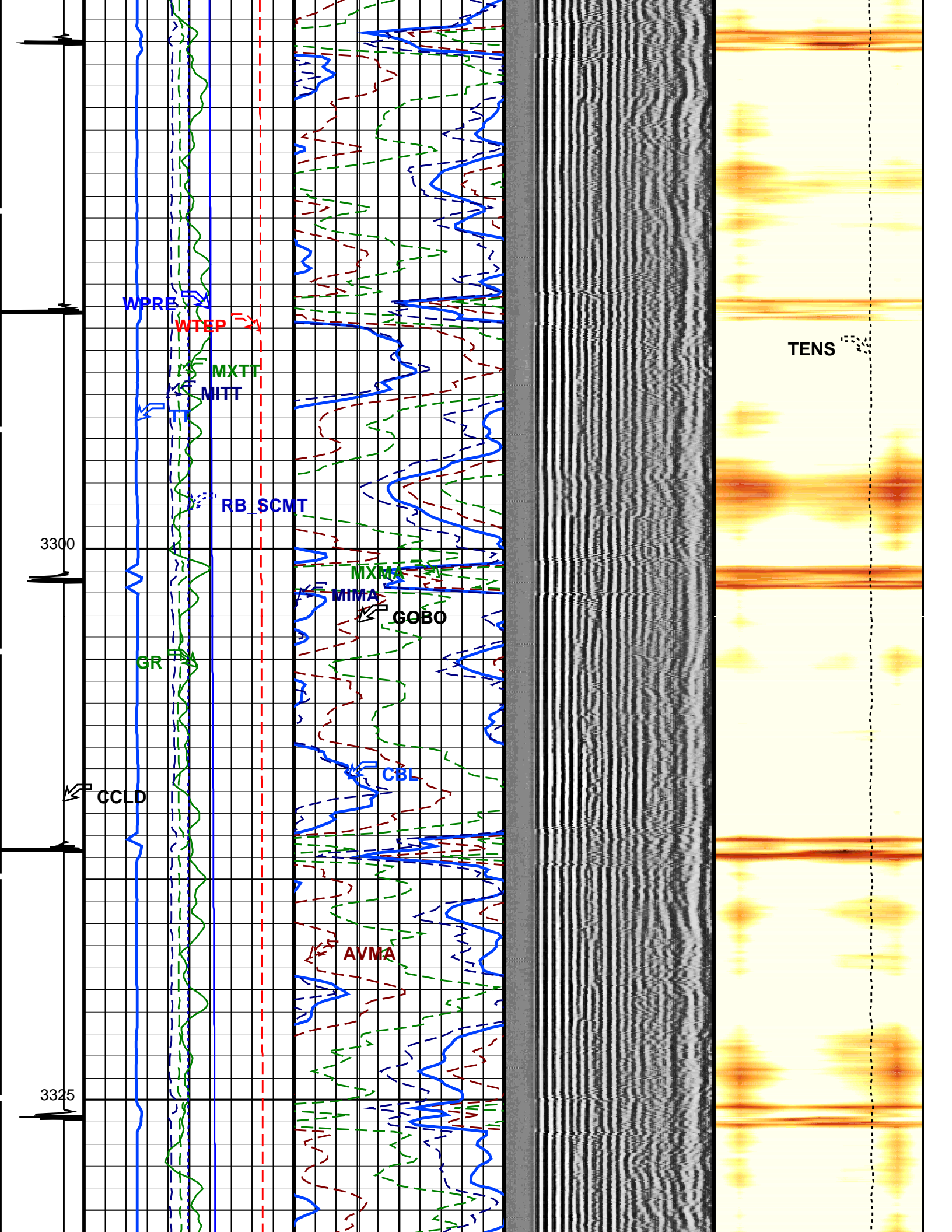












3300

3325

WPRE

WTEP

MXTT

MITT

RB_SCMT

GR

CCLD

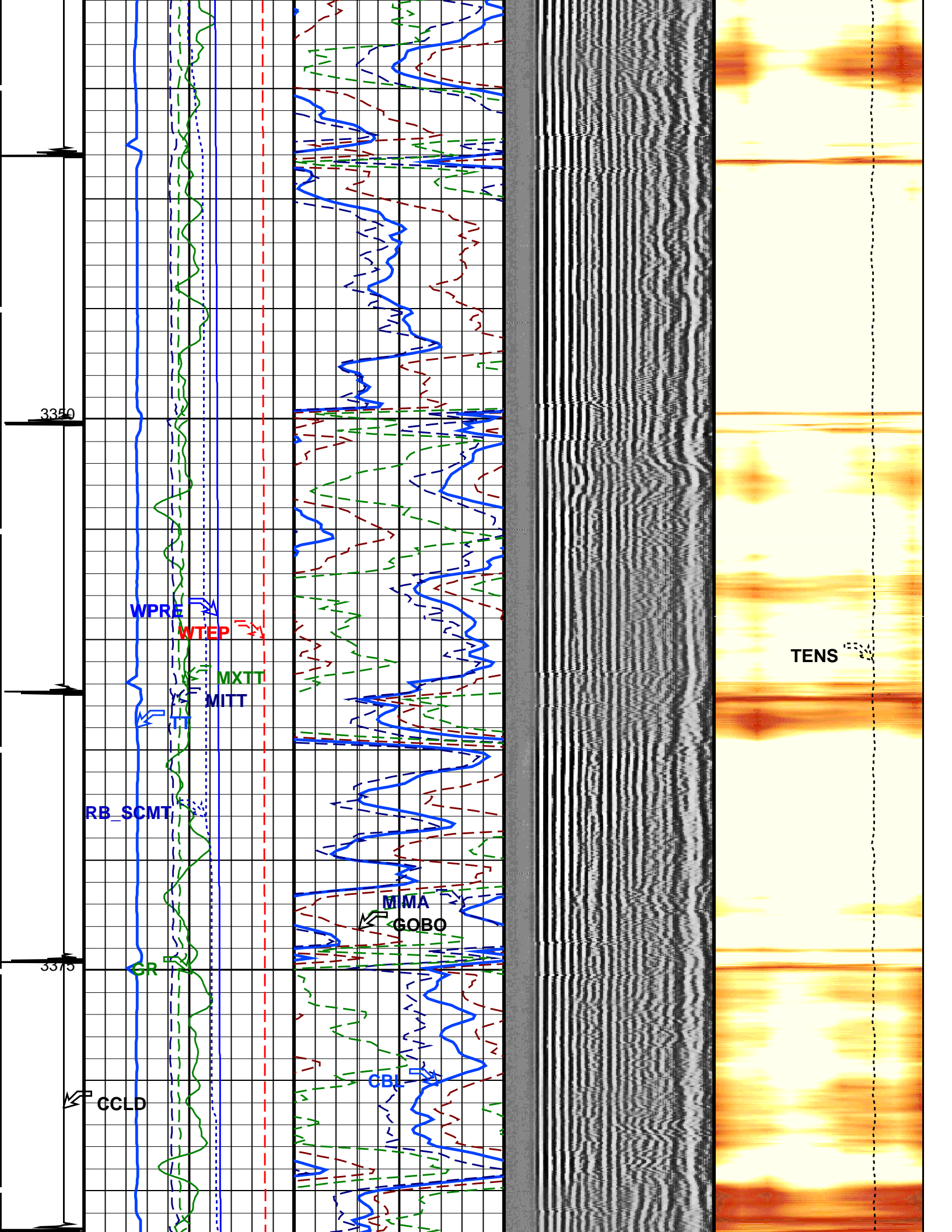
MIMA

GOBO

CBT

AVMA

TENS



3350

WPRE

WTEP

MXTT

MITT

RB_SCMT

GR

3375

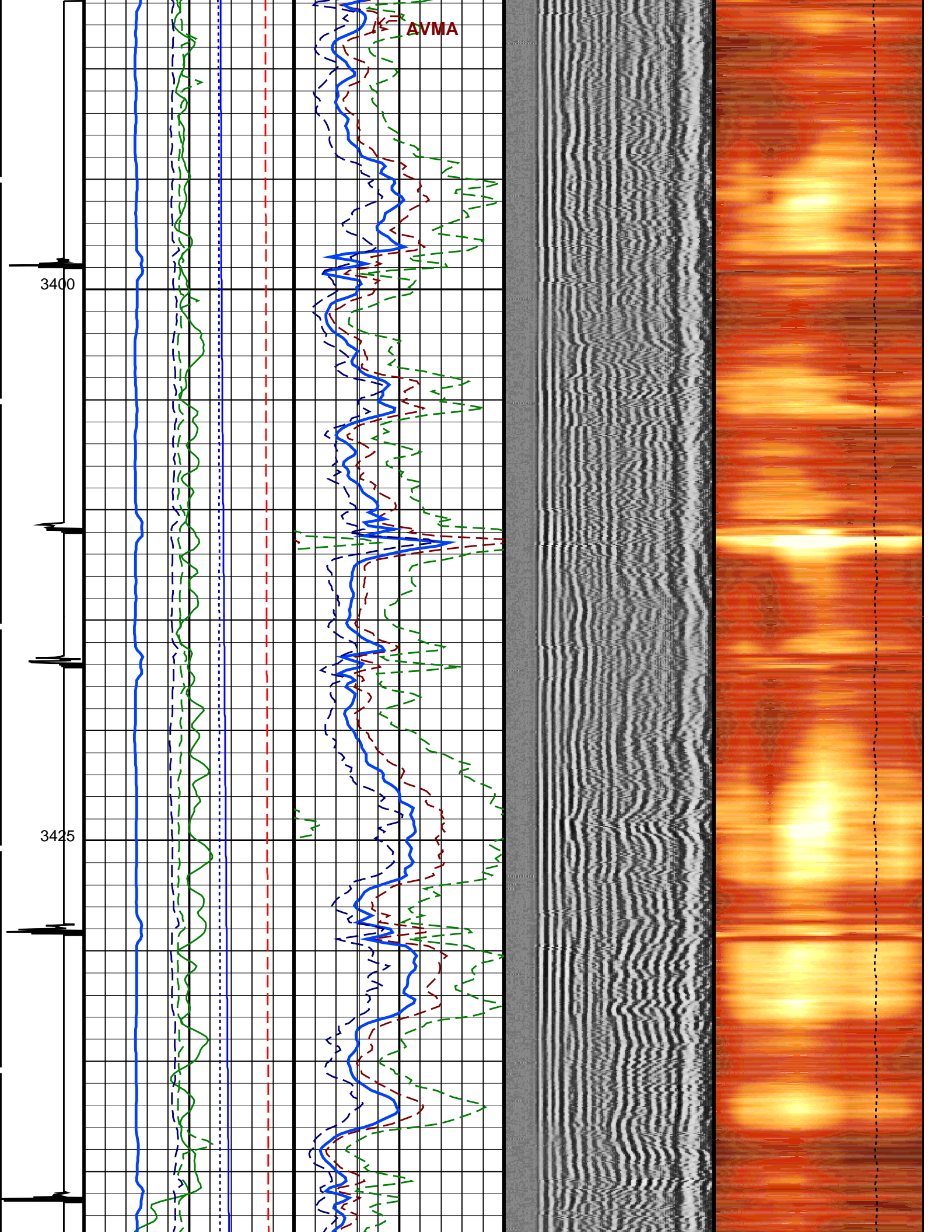
CCLD

MMA

GOBO

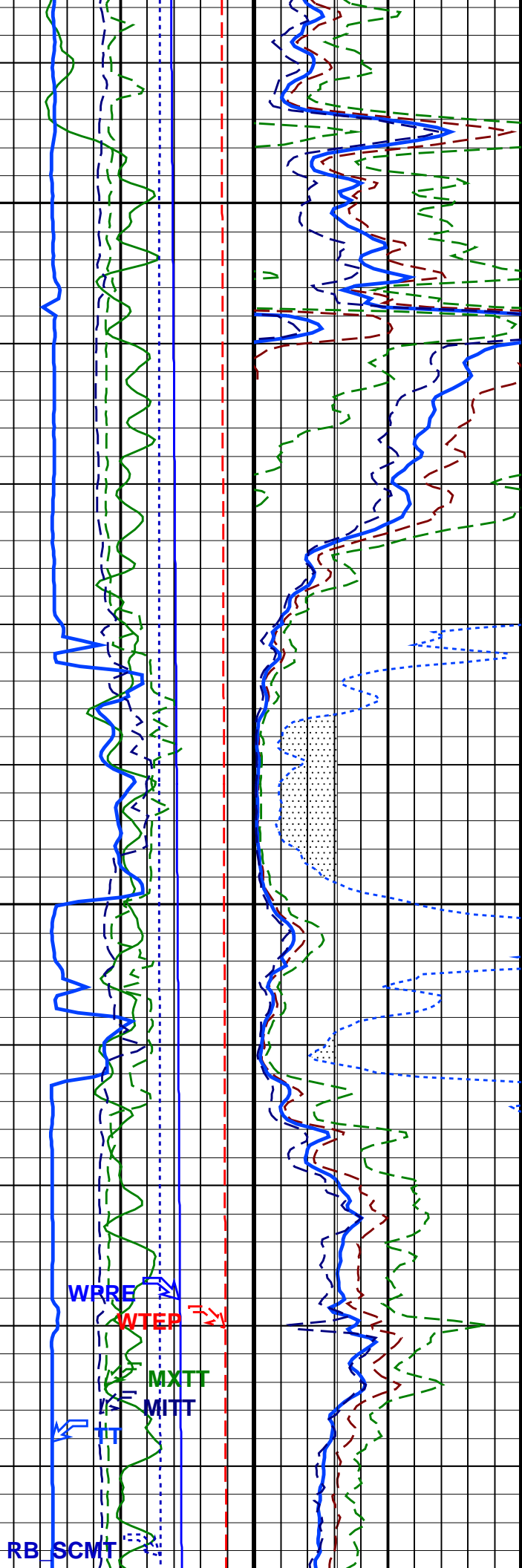
CBL

TENS



3450

3475



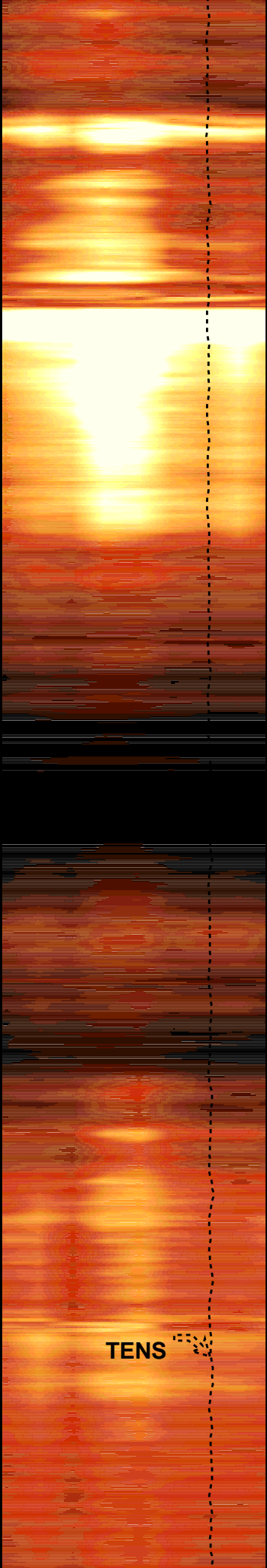
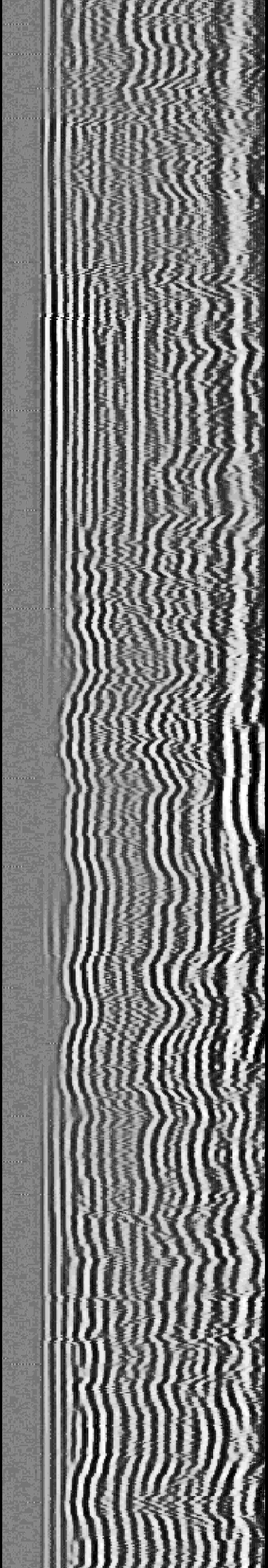
WRRE

WTEP

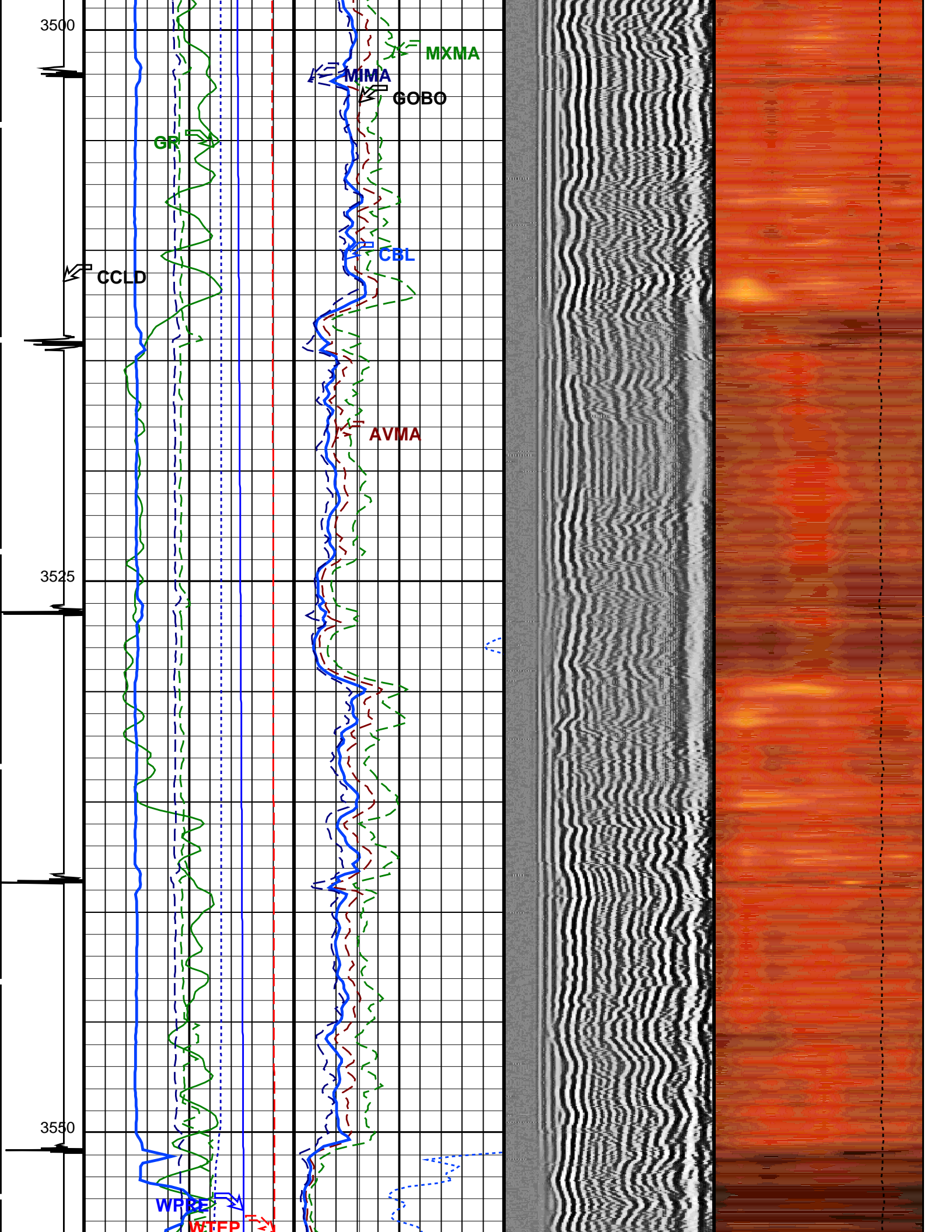
MXTT

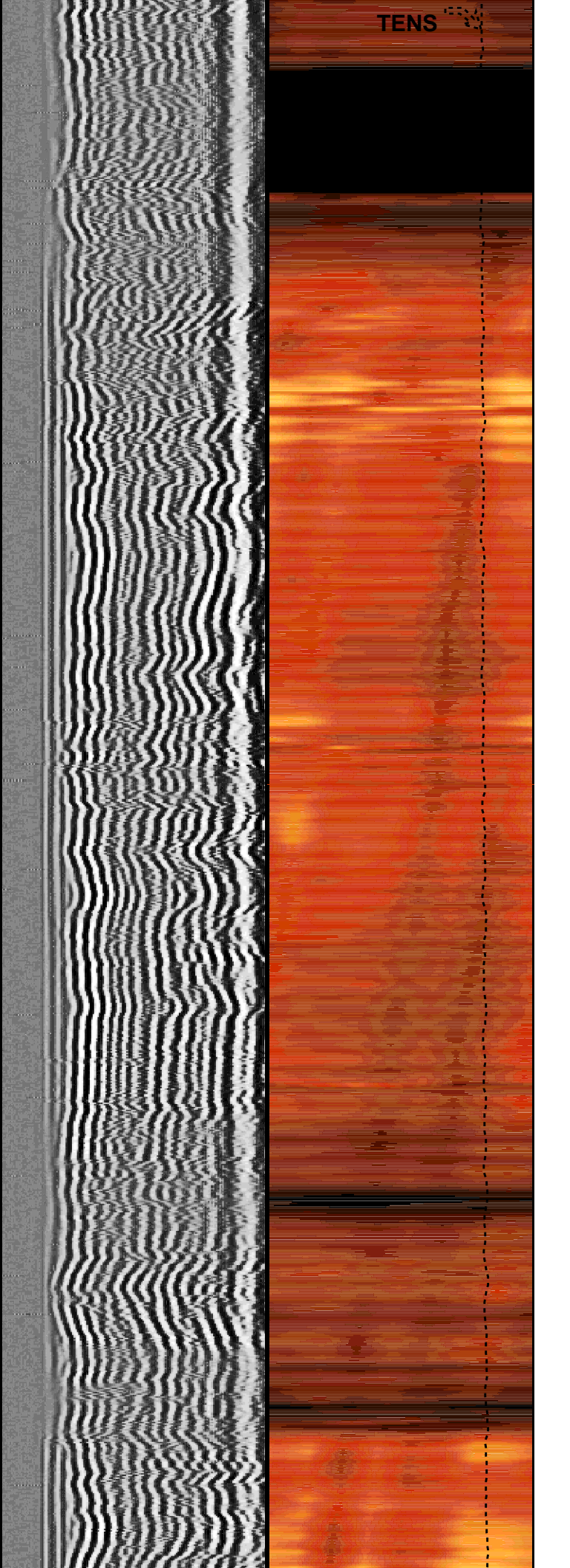
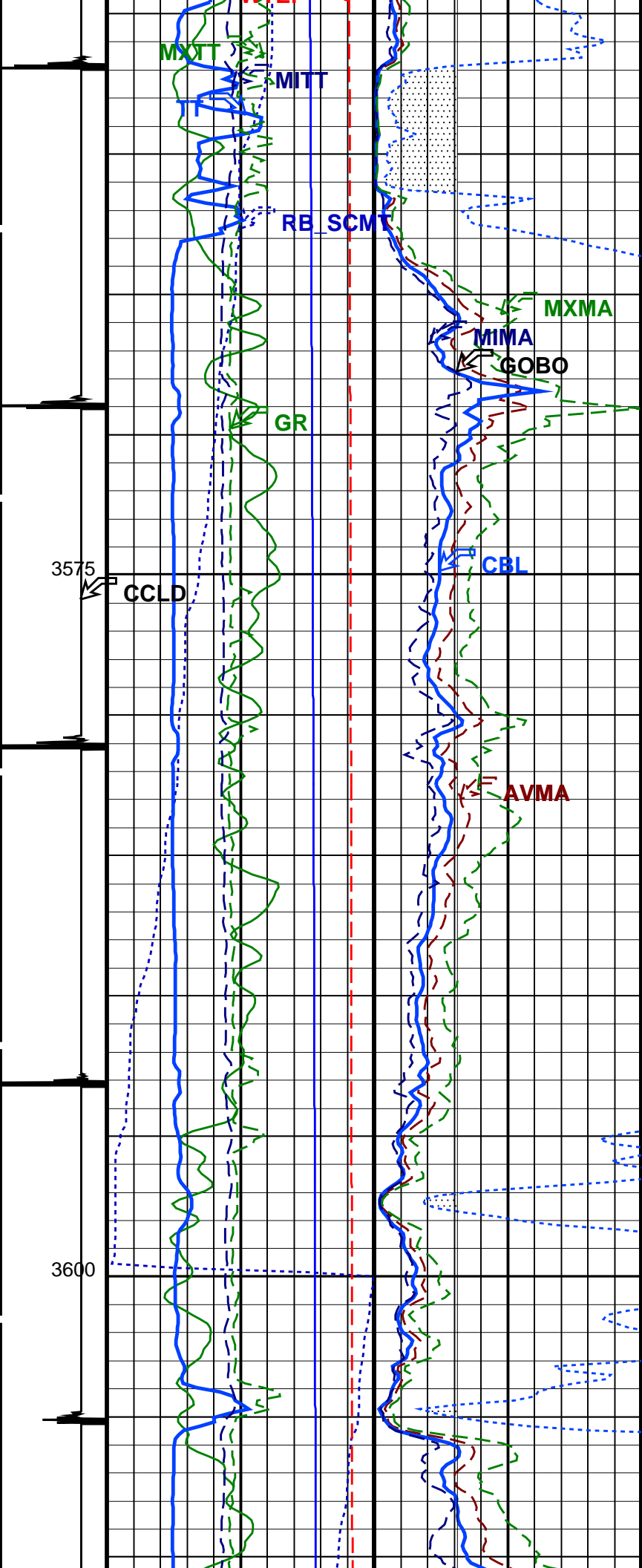
MITT

RB_SCMT



TENS





3625

3650

WRRE

WTEP

MXTT

MITT

RB SCMT

MXMA

MIMA

GOBO

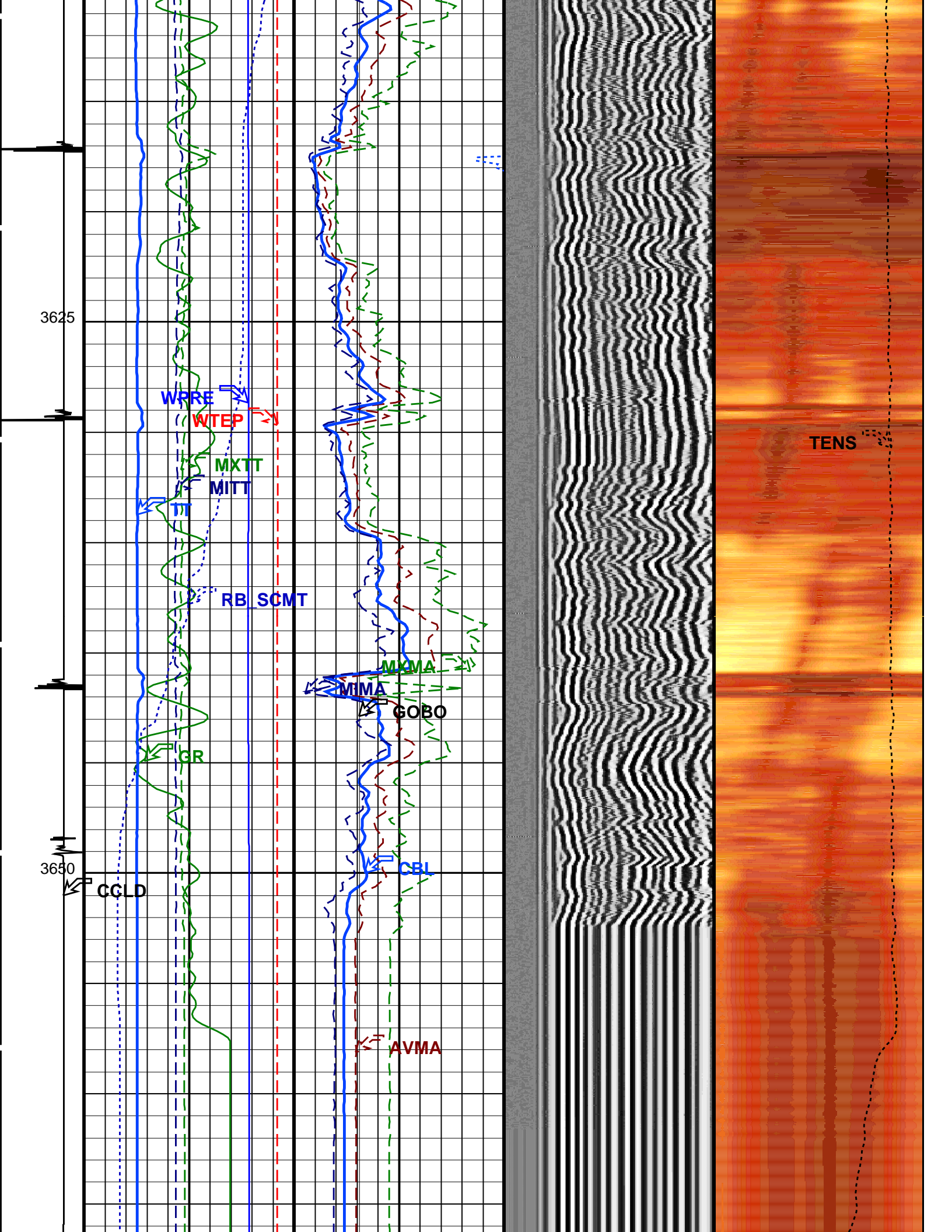
GR


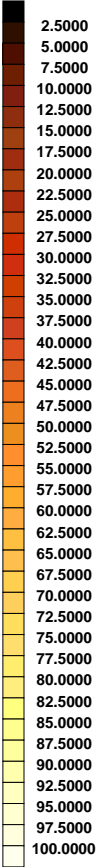
CGLD

AVMA

AVMA

TENS



Discriminat ed CCL (CCLD)	Gamma Ray (GR) (GAPI) 150		Average MAP Amplitude (AVMA) (MV) 100		Min	Amplitude	Max	Tension (TENS) (LBF) 4200	
	3 (V) -1	0	0	100	 VDL VariableDensity (VDL) (US) 200 1200			0	4200
	Relative Bearing (RB_SCMT) (DEG) 360		CBL Amplitude (CBL) (MV) 10		 CBL Amplitude Mapping Image (0 – 100) (MPWF) (MV)				
	Well Temperature (WTEP) (DEGC) 150		CBL Amplitude (CBL) (MV) 100						
	Well Pressure (WPRE) (KPAA) 30000		Good Bond (GOBO) (MV) 10						
	Cbl 3.ft Transit Time (TT) (US) 200 400		GoodBond From ACBL to GOBO						
	Minimum MAP Transit Time (MITT) (US) 100 300		Minimum MAP Amplitude (MIMA) (MV) 0 100						
	Maximum MAP Transit Time (MXTT) (US) 100 300		Maximum MAP Amplitude (MXMA) (MV) 0 100						

PIP SUMMARY

Time Mark Every 60 S

Format: Scmt_VDL_Image Vertical Scale: 1:200

Graphics File Created: 02-Nov-2006 05:56

OP System Version: 14C0-302
MCM

SCMT-CA

SRPC-3193-Q3_2006

PSPT-A/B

SRPC-3193-Q3_2006

<<<SCMT Cement Evaluation Information Summary>>>

Sonde Serial Number SCMS-CA 8117

Current Casing Size 4.50000 IN

Casing Weight 13.6000 LB/F

Expected CBL Amplitude in Free Pipe Section	81 MV	Minimum Sonic Amplitude	1.36216 MV (100% Cement)
			3.08376 MV (80% Cement)
		MAP Minimum Sonic Amplitude	7.44750 MV (100% Cement)
			12.5201 MV (80% Cement)

Master Calibration (Normalization)	Before Calibration (Adjustment)
------------------------------------	---------------------------------

Date of Master Calibration 20-APR-2004

CBL Correction Factor	0.0706343	CBL Adjustment Factor (CBAF)	1.0
MAP 1 Correction Factor	0.0930458	MAP Adjustment Factor (MPAF)	1.0
MAP 2 Correction Factor	0.0879021		
MAP 3 Correction Factor	0.102761		
MAP 4 Correction Factor	0.128061		
MAP 5 Correction Factor	0.105513		
MAP 6 Correction Factor	0.113724		
MAP 7 Correction Factor	0.130647		
MAP 8 Correction Factor	0.117759		

Parameters

DLIS Name	Description	Value	
SCMT-CA: Slim Cement Mapping Tool, 1-11/16 OD			
BILI	Bond Index Level for Zone Isolation	0.8	
CB3D	SCMT CBL 3 ft Peak Detection Mode	PEAK	
CB3G	SCMT CBL 3 ft Peak Detection T0_Delay and Noise Gate	216.051	US
CB3T	SCMT CBL 3 ft Fixed Threshold Level	20	MV
CB5D	SCMT CBL 5 ft Peak Detection Mode	PEAK	
CB5G	SCMT CBL 5 ft Peak Detection T0_Delay and Noise Gate	330.051	US
CB5T	SCMT CBL 5 ft Fixed Threshold Level	20	MV
CBLG	CBL Gate Width	40	US
CBRA	CBL LQC Reference Amplitude in Free Pipe	81	MV
CMCF	CBL Cement Type Compensation Factor	1	
CMTC	SCMT Slow Channel Multiplexer Mode	SCAN	
CMTM	SCMT Operating Mode	LOG	
CSCS	SCMT Slow Channel Index	VCC	
CTHI	Casing Thickness	0.303077	IN
DTF	Delta-T Fluid	160	US/F
FATT	Acoustic Attenuation due to Fluid	0	DB/M
FCF	CBL Fluid Compensation Factor	4.9755	
GOBO	Good Bond	3.08376	MV
MAPD	SCMT MAP Peak Detection Mode	PEAK	
MAPG	SCMT MAP Peak Detection T0_Delay and Noise Gate	159.051	US
MAPT	SCMT MAP Fixed Threshold Level	30	MV
MATT	Maximum Attenuation	45.8745	DB/M
MCCF	MAP Cement Type Compensation Factor	1	
MCI	Minimum Cemented Interval for Isolation	3.048	M
MMSA	MAP Minimum Sonic Amplitude	7.4475	MV
MSA	Minimum Sonic Amplitude	1.36216	MV
PEDE	Peak Detection On/Off Switch in Playback	OFF	
RBC	Relative Bearing Correction Allow/Disallow	ALLOW	
VDLG	VDL Manual Gain	5	
ZCMT	Acoustic Impedance of Cement	6.8	MRAY
System and Miscellaneous			
CSIZ	Current Casing Size	4.500	IN
CWEI	Casing Weight	13.60	LB/F
DFD	Drilling Fluid Density	1.32	LB/G
TD	Total Depth	3675	FT

Output DLIS Files

DEFAULT	SCMT_PSP_030LUP	FN:29	PRODUCER	02-Nov-2006 05:56
---------	-----------------	-------	----------	-------------------